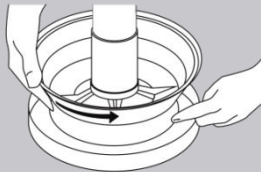


MULTIBECK

USING WITH BROILERS

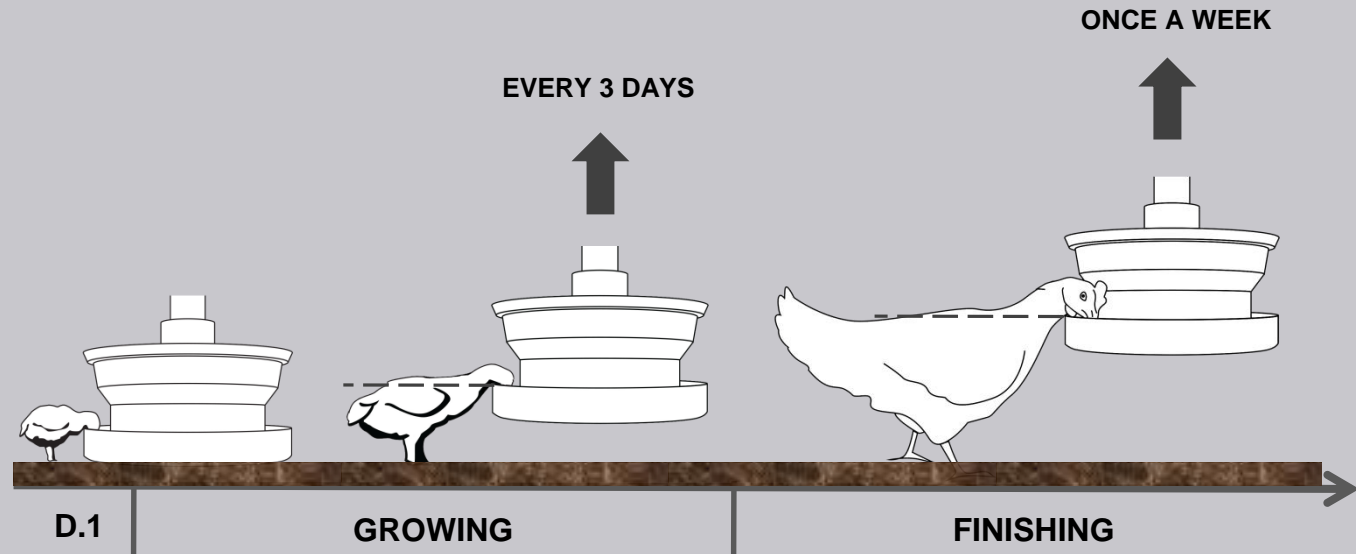
BEFORE CHICKS ARRIVE

- ▶ Turn the upper pan $\frac{3}{4}$ to 1 turn from lower pan



- ▶ Turn on the feed line
- ▶ Distribute the feed by slightly shaking the feeder

BROILER'S BACK → LEVEL WITH LOWER PAN EDGE
(The neck of the bird should be slightly outstretched when eating)

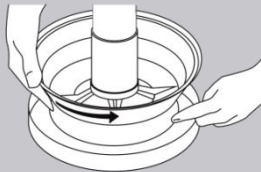


MULTIBECK

USING WITH TURKEYS

BEFORE CHICKS ARRIVE

- ▶ Turn the upper pan $\frac{3}{4}$ to 1 turn from lower pan

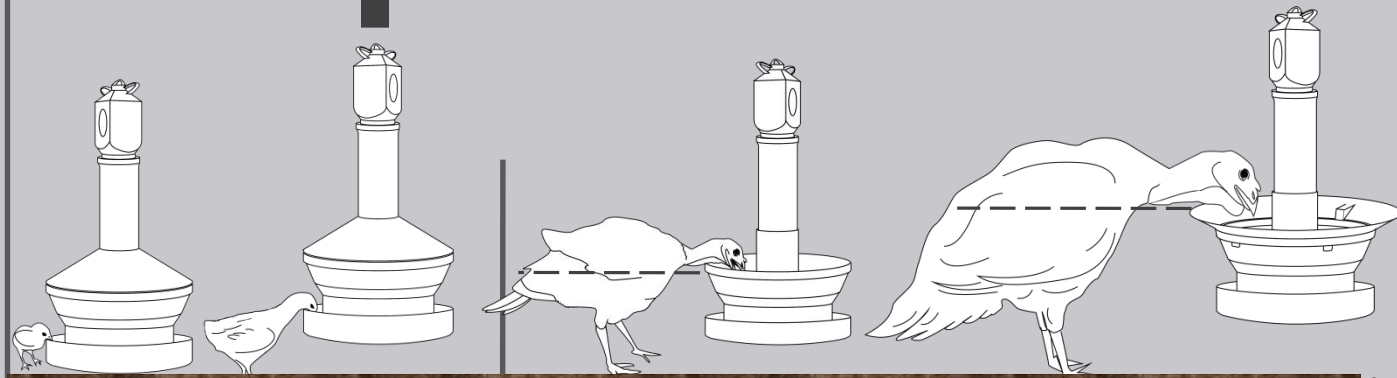


- ▶ Turn on the feed line
- ▶ Distribute the feed by slightly shaking the feeder

EVERY 3 DAYS
Turkey's back →
level with lower pan



RAISE GRADUALLY
Female crop →
level with upper pan



D.1

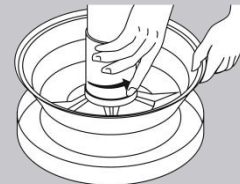
GROWING

FINISHING

AFTER FEMALE REMOVAL

WEEK 5

Transition to upper pan



Install the collar

