

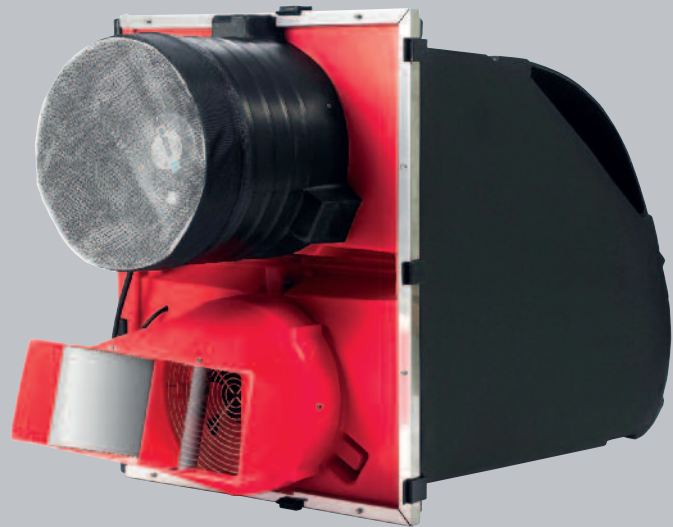
# LEAD'AIR 1400 HEAT EXCHANGER

COMPLEMENTARY  
TO THE VENTILATION



IMPROVES THE ATMOSPHERE AND REDUCES HEATING COSTS

- ▶ Easy to install and use
- ▶ Controls humidity for drier litter
- ▶ Easy cleaning and disinfection
- ▶ Continuous running with RDC control or REC



[www.leadleroy.com](http://www.leadleroy.com)

**Le Roy**    
LEAD LE ROY CONCEPT

DESIGNER AND MANUFACTURER OF LIVESTOCK EQUIPMENT

# LEAD'AIR 1400 HEAT EXCHANGER

## COMPLEMENTARY TO THE VENTILATION

### Easy to install and use

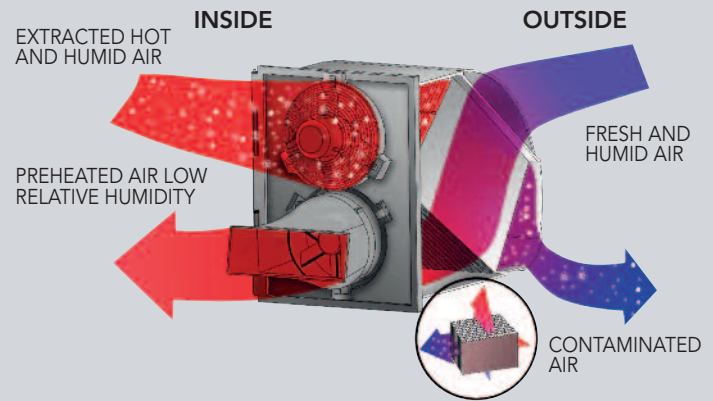
- ▶ One person can install the heat exchanger on the building.
- ▶ Easy to use and clean.
- ▶ Removable exchanger unit for total disinfection of the air inlets and outlets.
- ▶ Continuous running with RDC control or REC.

### Allows for substantial gas savings

- ▶ The heat exchanger uses building heat to warm the incoming air.
- ▶ Maximum heat recovery without recycling.
- ▶ The HRV reduces building heating needs.

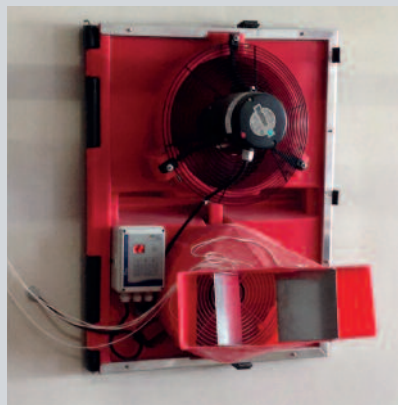
### Better atmosphere

- ▶ Uniform building temperatures following the set temperature.
- ▶ Reduces temperature range.
- ▶ Homogeneous control of humidity in the building.
- ▶ Reduction of emissions: less ammonia, less odour, less dust.



Results based on a dynamic building of 1100m<sup>2</sup>,  
Broiler production - tested with 4 heat exchangers:

Air temperature inside	30°C
Air temperature outside	0°C
Air inlet temperature	25°C
Straw savings	1 ton
Gas savings	35 %



### Technical features

- Width 550 mm, height 725 mm
- Electrical requirement: fan 1400 rpm: 220V; 1A; 220 Watts
- High resistant polyethylene
- No drainage in the building
- Control unit in option for a centralized management

www.leadleroy.com

#### Contact:

Z.A. La Richardière

35530 Noyal sur Vilaine - France

Tel.: +33 (0)2 99 50 73 98

Fax: +33 (0)2 99 51 18 73

E.mail: [contact@leadleroy.com](mailto:contact@leadleroy.com)

**Le Roy**   
LEAD LE ROY CONCEPT

DESIGNER AND MANUFACTURER OF LIVESTOCK EQUIPMENT